



Reception 2024

Welcome to  
Astley C of E Primary School

# Our Vision

*'Let your light shine before others, that they may see your good deeds and glorify your Father in heaven.'*

Matthew 5 VI6

At Astley CE Primary School, children and adults **'Let their light shine'** in all that they say and do. Our vision is to enrich and develop the community in the truest likeness of God. We believe that **everyone can shine and be curious, confident and caring** and have an understanding and acceptance of all within the diverse world we live in. **Love, respect, courage and joy drive our daily actions** and thirst for living and learning.

*In God's likeness, we  
shine our light in all  
we say and do;  
through love, respect,  
courage and joy.*

**curious, confident, caring**



# What to expect this evening...



A typical day in Reception



Staff



Day to day expectations



First half term curriculum



Parental Engagement



Key Dates



Things to do over the summer



Reception 2023 have their say

# Our Early Years Ethos at Astley

We believe that young children learn best through play.

Our curriculum is implemented through planned, purposeful play, and through a range of adult-led and child-initiated activities. Staff respond to each child's emerging interests, guiding their development through warm positive interactions.

We know that long periods of uninterrupted play, including being outdoors, allow children to grow spiritually and fosters a love for learning that lasts.





# Typical Reception Day

8:40 - 8:55am - children arrive and participate with fine motor skills activities

9:00am - Phonics

9:30am - Independent learning time

11:30am - Focus Session (Maths)

12:00 - 1pm - Lunch

1:00 - Focus Session

1:30 - Independent learning time

3:00pm - Story/Poetry/Reflection time

3:20pm - Home time

# Forest School

A weekly Forest School session with Mrs Griffiths every week (the day will be confirmed in September).

Children come to school dressed in Forest School clothing, wearing their school shoes.

Forest school shoes are to be brought in a separate bag.

## Forest School clothing:

Long trousers

Long sleeved shirt

Jumper

Sturdy shoes

If wearing wellies, thick socks will be needed



# Outdoor Learning

We will be using the Forest School environment and the local area as our classroom on a Friday.

Children should come to school in forest school clothing. If this changes throughout the year we will let you know.

It's important that your child has access to a waterproof coat and trousers daily.



Adults your  
child will  
work with  
within  
school



Class Teacher -  
Miss Creig  
SENDSCO



Class Teacher -  
Mrs Roberts  
Tuesday and Wednesday  
morning



Mrs Griffiths  
Forest School Leader



Mrs Pogmore  
Office Manager

# Uniform

*We have a healthy stock of second-hand uniform available for a small donation.*

- Navy blue jumper or cardigan with Astley logo
  - Navy blue polo t-shirt
- Navy blue joggers/grey trousers/shorts/skirt or pinafore dress
  - Blue and white checked summer dress
  - Black school shoes
  - No jewellery
- Water bottle filled with water each day

## PE Kit

- Navy PE t-shirt
- Red PE shorts
- Navy jogging bottoms
- Wellies that remain in school
- Waterproofs (tops and bottoms or all in one suit)
  - Spare pair of pants and socks in PE kits

All other uniform is available from [www.ahyde.co.uk](http://www.ahyde.co.uk)

Please ensure everything is named.



# Other points

Every child will need a book bag. They will use this as they move through the school.

A book bag helps the children to be independent.

There is not space on the children's peg for large bags.

Long hair must be tied up and any hair accessory must be small and in either navy or black.

Children should not wear nail varnish, have tattoos or wear jewellery.



On my  
peg

Book bag only



Water bottle



Outdoor shoes - no laces

Waterproofs



Wellies

# Lunch

## Hot Lunches

*Free School Meals* - Please apply via the link in your welcome packs - you could qualify for additional meal vouchers to be used during holidays.

Universal Infant Free School Meals are currently available to every child in Reception, Year 1 and Year 2.

Meals need to be ordered in advance through our online payment system called 'Arbor'.

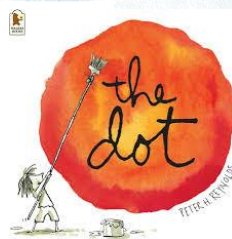
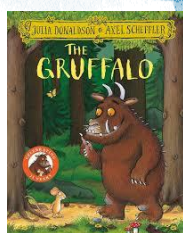
## Packed Lunch

Children may choose to bring a packed lunch. This should be balanced and healthy meal.



# First half term curriculum

Astley is proud to be a reading school.

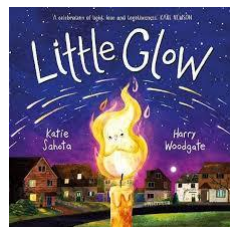
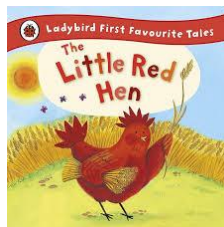


Our Enquiry Questions:

Where do I live?

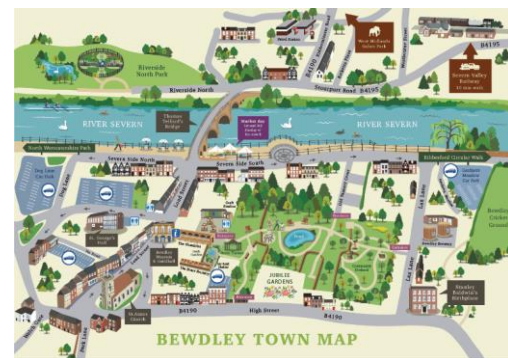
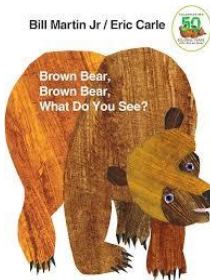
Where can I go on a coach?

Your child's reading journey will begin as soon as they start school.




How do we celebrate at Astley?

We use RWI phonics.



A parents meeting will be held during the first half term, where we will share how we teach Phonics and Maths at Astley.

# Parental Engagement

- A Drop-In meeting on Tuesday 24th September at 3:20pm
  - Seesaw  *Seesaw*
  - Macmillan Coffee Morning
- November and March Parents evening
  - End of year report in July
    - Class assembly
- Friday morning shared reading (8:40 - 8:55am)
- Celebration Assembly - Fridays at 2:50pm
  - Friends of Astley



# Key Dates

## Transition sessions:

6th June - outdoor session with new to Astley parents (2-3pm)

11th June - Forest School session (9:30-11am)

28th June - Teddy's Bear Picnic (1:30-3pm)

1<sup>st</sup> July - Home Visits for those children not currently attending Astley Early Years

3<sup>rd</sup> July - classroom activities (9:30-11:30am)


11<sup>th</sup> July - move up morning (9-11:30am)

With your permission, we will also contact your child's nursery setting.

## First Day

4th September - from 8:40am





# School Nurse Team

We work closely with the School Nurse Team who will visit school regularly throughout the year.

- They will visit for dental checks, height and weight checks, hearing test and eyesight test.

We can also access their support for toileting and eating as well as any other parental support that is needed.

You must register on SchoolScreeners to see results of these tests or to opt your child out. Further details are in your packs.

# Attendance

## ATTENDANCE MATTERS



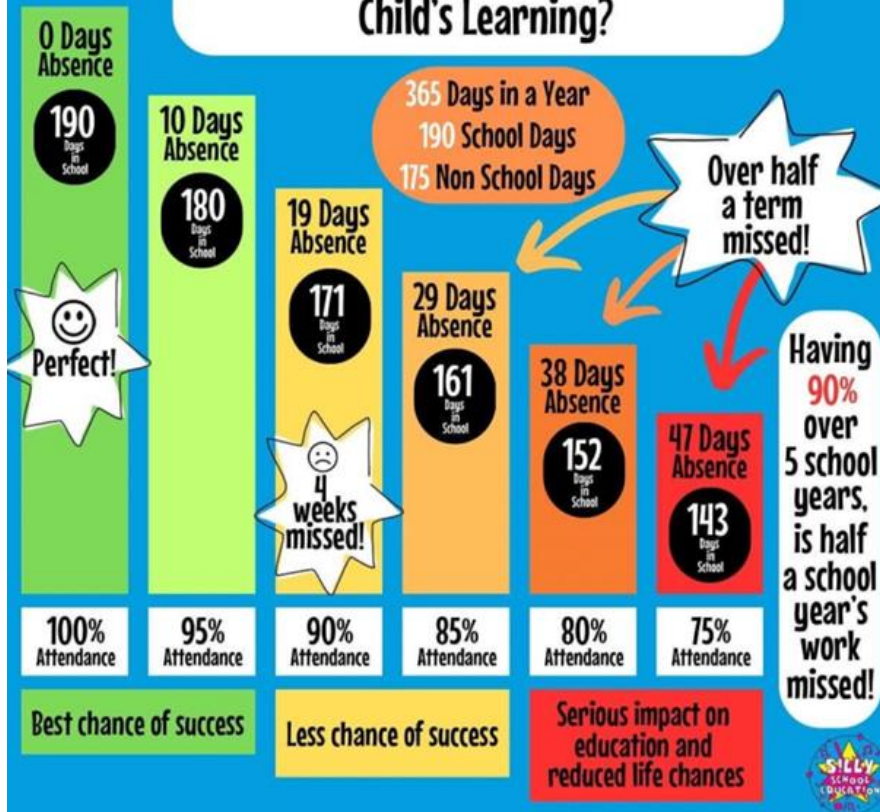
**LOST MINUTES  
=  
LOST LEARNING!**

**EVERY SCHOOL  
DAY COUNTS!**



**Every school day counts BUT every minute is equally important!**

## How Does School Attendance Affect a Child's Learning?



# Things to do over the summer

Singing lots of nursery rhymes, retelling familiar tales and joining in with a tune.

Cutting, scooping and picking up my food with a knife, fork and spoon.

Hopping, throwing, catching, climbing, balancing, running and baking

Opening lids, squeezing and brushing will make my body and hands ready for mark making.

Organising my toys, putting them away and independently finding things I need.

Listening for sounds in words and blending them together will help me to later read.

Recognising my name will help me find my peg and put my belongings away

Eagerness to explore, join in with games, take turns and share will help me in my play

Asking for help from an adult if I hurt myself or need the loo.

Dressing myself by putting on my coat and shoes is something to practice too.

You will be ready, of that I am sure!

Ready to start your exciting School adventure.



# Developing independence



TAG TO THE  
TOES

HANDS IN THE  
HOLES

AND FLIP!



# What to do now...

- Tick which transition sessions your child will attend
- Have your child's birth certificate checked by Mrs Pogmore
- Bring back to school completed forms by the 7th June
- Uniform order completed and handed to Mrs Pogmore tonight please

